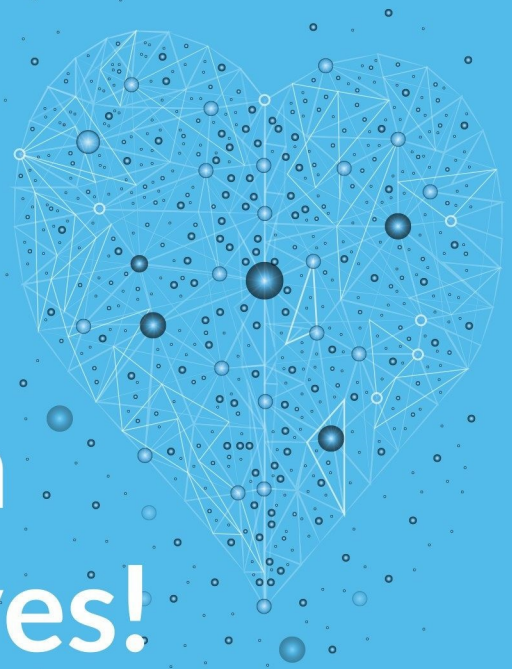


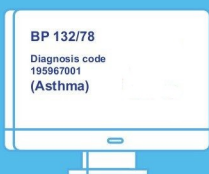
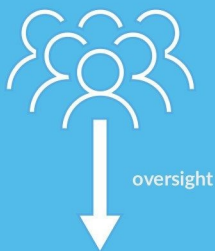
THIN

THE HEALTH IMPROVEMENT NETWORK

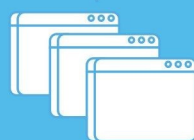
Your health data can help save lives!



THIN advisory committee
(patients, clinicians, researchers)



GP patient record



THIN research database

Opt out



THIN research database

What is THIN®?

When you visit the GP, pharmacy, or hospital, information about your health and treatments (such as diagnoses, test results and medicine prescriptions) is recorded. This is used for your own care and to improve health and care services.

This general practice contributes to the THIN® UK database, which collects health information in compliance with current regulations including GDPR, for research to benefit future patients. This includes electronic prescription messages between your GP and the pharmacy where you collect your medicines, and also information from hospitals about your admissions and diagnoses.

THIN® has been used to study many health issues including infections, cancer, diabetes and medicine safety.

Governance

The use of THIN® datasets is overseen by an Advisory Committee composed of patients, clinicians, and researchers from University College London and the University of Birmingham. They ensure that datasets are used for research in a safe, confidential and appropriate way. The THIN® UK database is managed by THIN Ltd., a company established to enable health data to be used for patient benefit. For more information, please contact info@the-health-improvement-network.co.uk.

Confidentiality

Coded information in health records is extracted automatically for research in compliance with current regulations including GDPR, without including personal identifiers such as name or address. THIN® UK database is stored securely at all times, and is only accessible to necessary staff to conduct the research.

Opting out

If you do not want your data to be used for research, please let practice staff know, and your records will not be collected for THIN®. This will not affect your care in any way.